

# Xpert® CT/NG

## Endocervical Specimen Collection

	Xpert CT/NG Swab Specimen Collection Kit	Specimen
<b>Intended Use</b>	Designed to collect, preserve and transport endocervical specimens from symptomatic and asymptomatic individuals to the laboratory prior to analysis with Xpert CT/NG	Swab samples stored in Xpert CT/NG Swab Transport Reagent tubes
<b>Kit Contents (each)</b>	1 large sterile cleaning swab 1 flocked collection swab 1 tube swab transport reagent (pink cap)	<b>Transportation Temperature</b> 2-30°C
<b>Kit Size</b>	50	<b>Stability</b> Up to 60 days at 2-30°C before testing with Xpert CT/NG

### Specimen Collection Instructions

- 1 Open kit and obtain large cleaning Swab.



- 2 Remove excess mucus from cervix and area using the large cleaning swab.

- 3 Open package and obtain small collection swab from wrapper.



- 4 Insert small collection swab into endocervical canal and rotate clockwise for 10-30 sec in the canal. Remove swab.

- 5 Place small collection swab into **pink cap** transport tube, breaking swab at scoreline into tube.



- 6 Cap tube and label with patient ID, and date as required.

### Limitations

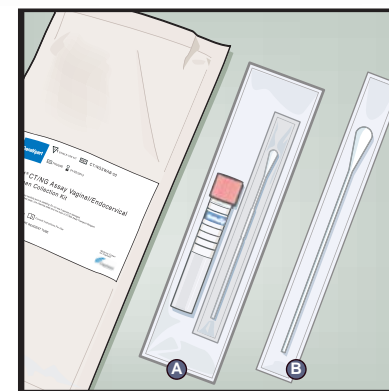
Please refer to Xpert CT/NG Package Insert for data on interfering substances.

# Xpert® CT/NG

## Endocervical Specimen Collection

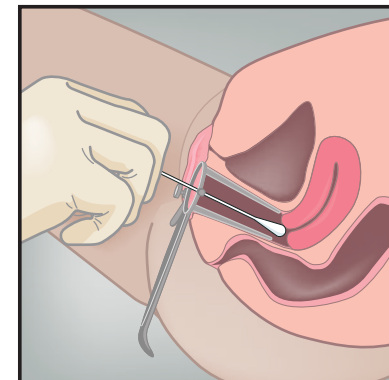
1 The Xpert® CT/NG Vaginal/Endocervical Specimen Collection Kit contains

- Ⓐ Transfer Reagent with collection swab
- Ⓑ Cleaning Swab



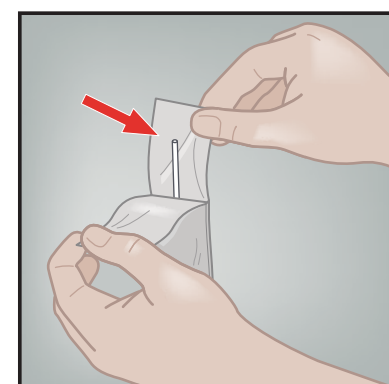
2 Remove excess mucus from the cervix and surrounding area using the large individually wrapped cleaning swab Ⓑ.

Discard the swab.

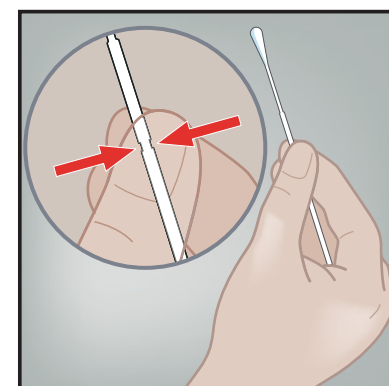


3 Open package Ⓐ that contains the pink-capped Xpert Swab Transport Reagent tube and individually wrapped collection swab. Set the tube aside before beginning to collect sample.

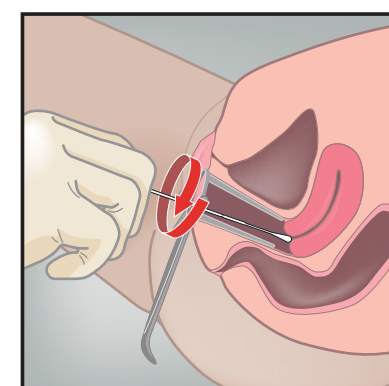
Open the collection swab wrapper by peeling open the top of the wrapper.



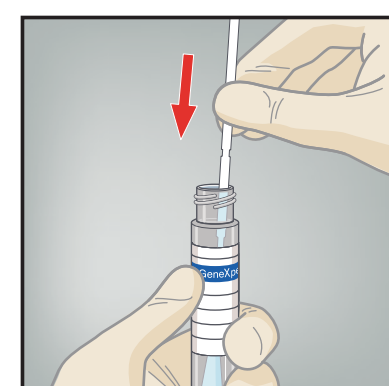
4 Hold the swab in your hand, placing your thumb and forefinger in the middle of the swab shaft.



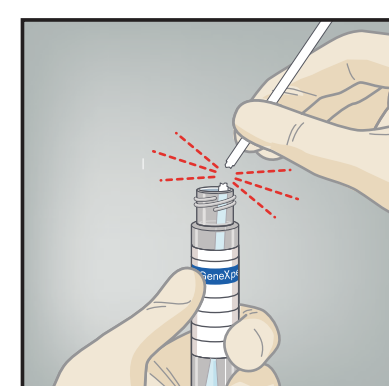
5 Insert the collection swab into the endocervical canal. Rotate the swab clockwise for 10-30 seconds in the endocervical canal. Withdraw the swab carefully.



6 Unscrew the cap from the transport tube. Immediately place the specimen collection swab into the transport reagent tube.



7 Identifying the scoreline, break the swab shaft against the side of the tube. Discard the top portion of the swab shaft.



8 Re-cap the swap transport reagent tube and tighten the cap securely. Label the transport tube with the sample identification information, including date of the collection, as required.

